

## Ceiling Boom-ZE Economy

### Technical Data

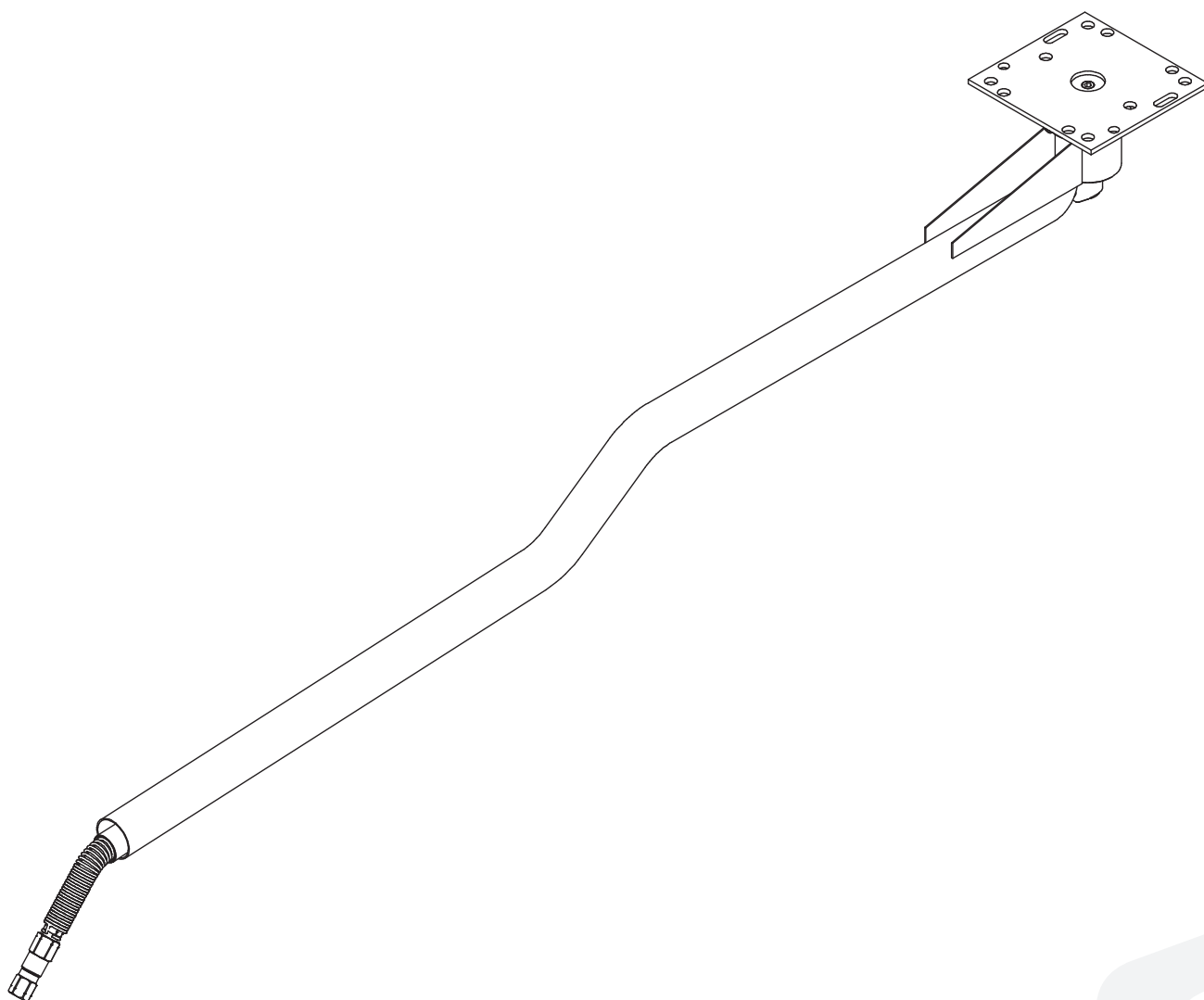
Pressure	4000psi
Temperature	120°C
RPM	max. 30 rpm
Throughput medium	water, oil, air at pH 3-12

### Indication (original language German):

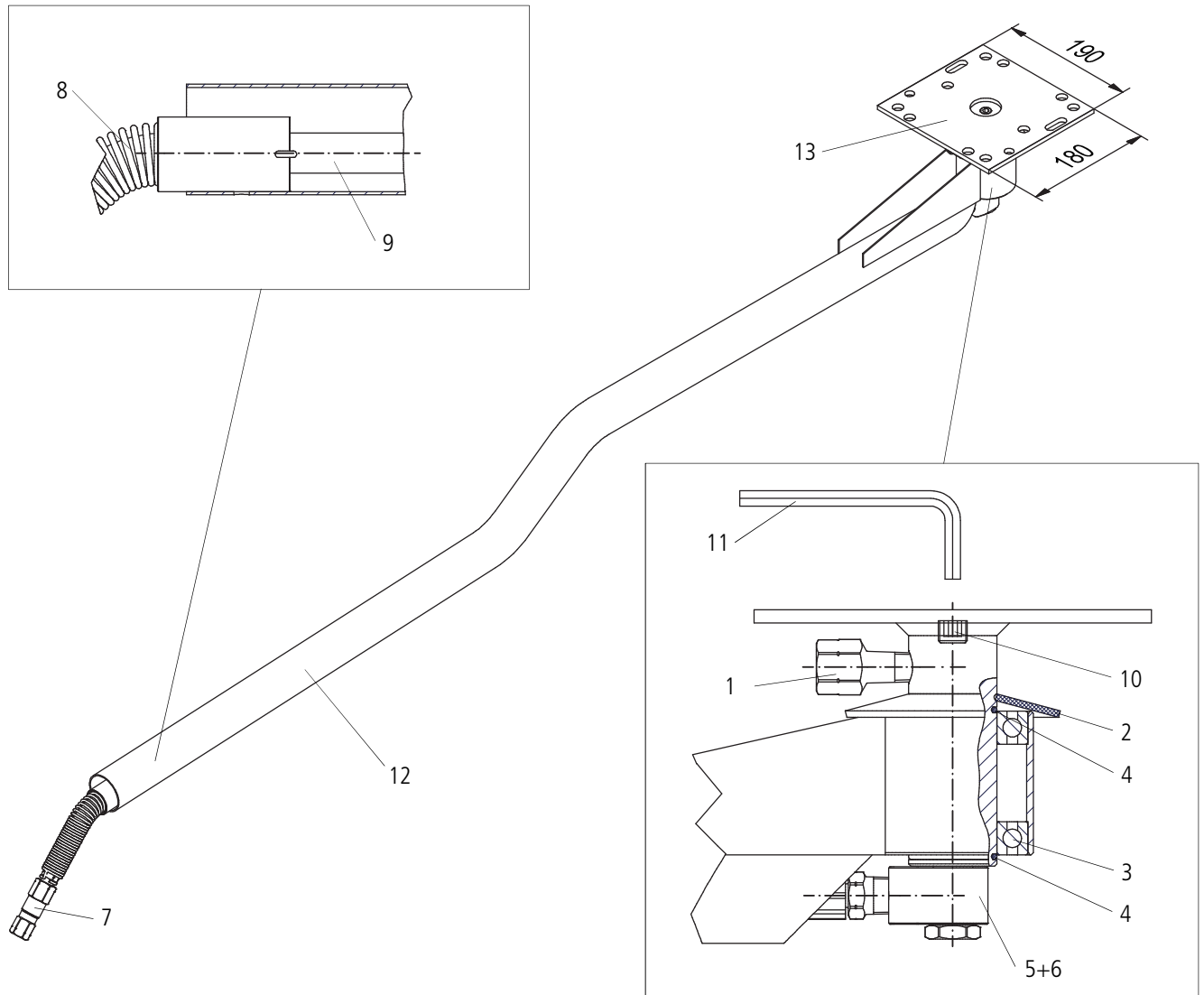
- Read all instructions, check overall conditions and safety requirements before initial operation of the product.
- Our product should only be installed by experienced users of high pressure equipment.
- Safety regulations and guidelines (Accident Prevention Rules) from the manufacturer of your high pressure cleaner are applicable.
- No modifications to the product are permitted.

### ⚠ Caution:

- Always use protection gear when using products connected to high pressure.
- Before any maintenance, turn off the high pressure water supply, e.g.: turn off and secure the power switch.




## Ceiling Boom-ZE Economy



### Assembly instructions (original language German)

1. Install the ceiling boom (12) with the mounting plate (13) to the concrete ceiling or to the steel beam.
2. Tightly fasten the high pressure hose or the high pressure pipe connection coming from the high pressure pump, to either top or side connection.
  - for side inlet: mount adapter (1) on the side and plug top inlet with stud bold (10).
  - for top inlet: mount adapter (1) on top and plug side inlet with stud bold (10).
3. Tightly fasten the high pressure hose with lance or brush to the swivel (7).

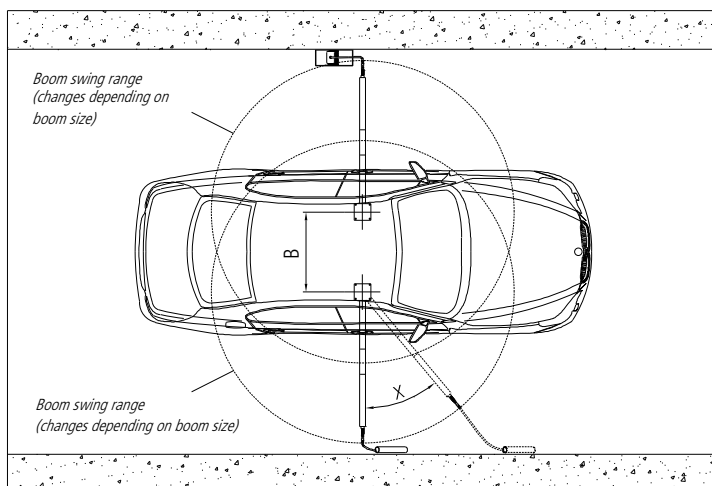
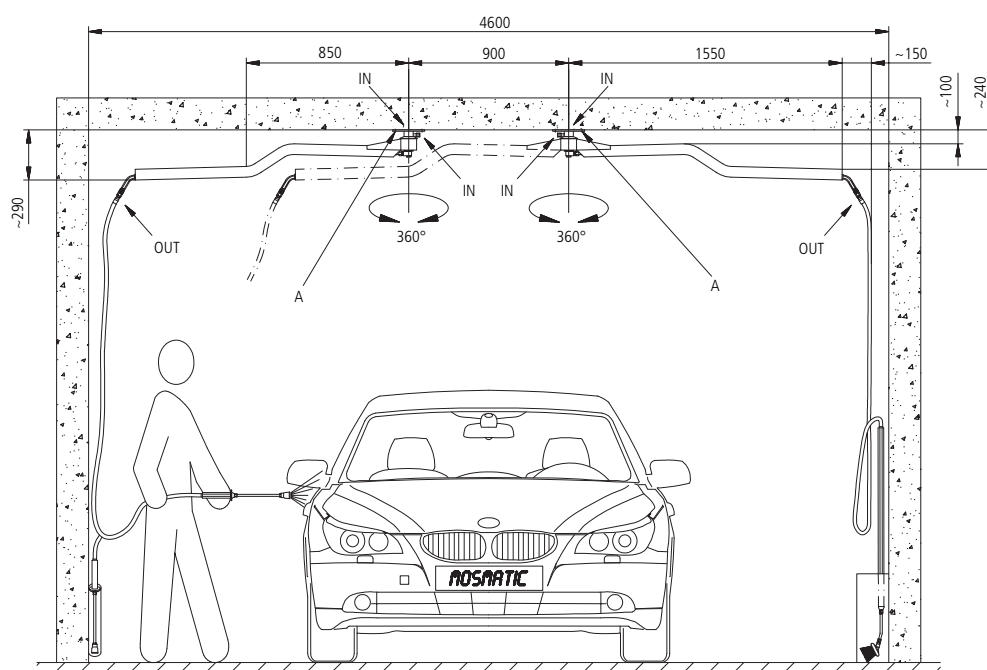
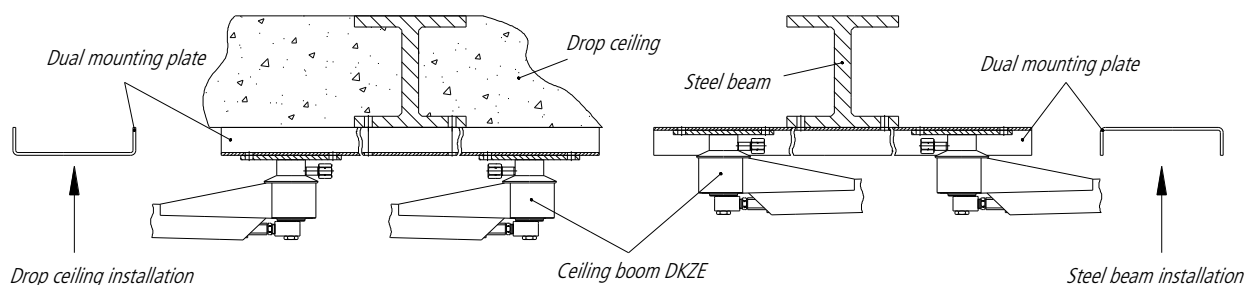
 We recommend checking swivel-connections once a year for normal wear and tear. **No greasing required.**

### Spare parts list

Pos.	Art. Nr.	Description
1	51.129	Coupling 3/8"NPT-F
2	901.805	Rubber cone
3	902.709	Ball bearings
4	902.701	Retaining ring for shaft
5	40.019	Swivel 90°
6	40.502	Seal-Kit for Swivel 90° (*)
7	32.569	Swivel 3/8"NPT-F
8	901.858	Tension spring
9	901.861	HP-Hose
10	901.043	Stud bolt G1/4"×kM
11	901.080	Hexagon socket wrench

**\*Exchange with seal-service-set V-1346 (please order separately)**

## Ceiling Boom-ZE Economy



Mounting plate (A)

Thickness: 6mm

Bearable hole load: min. 30'000N (e.g.: bolt M12)

- other versions and sizes upon request

If ceiling boom are positioned on an angle (X),  
minimum axle distance (B) changes.